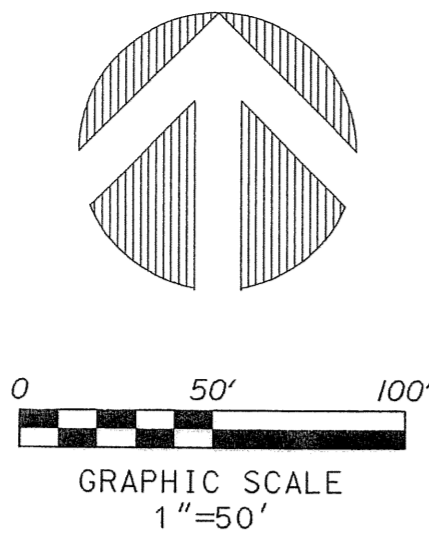


SURVEYING & MAPPING
Certificate of Authorization No. LB7264
Prepared by: Jeff S. Hodapp, P.S.M.
951 Broken Sound Parkway, Suite 320
Boca Raton, Florida 33487
Tel: (561) 241-9988
Fax: (561) 241-5182



TIVOLI ISLES P.U.D.

441 - ATLANTIC P.U.D. (CONTROL NO. 04-206)

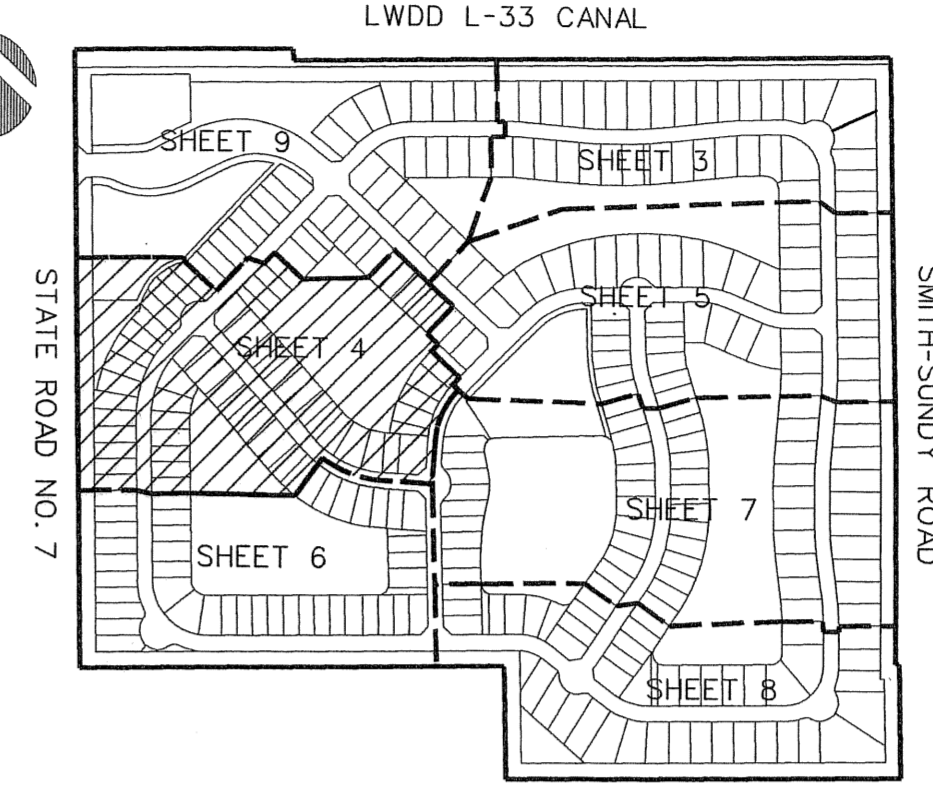
A REPLAT OF ALL OF TRACTS 79-87, 106-112, AND A PORTION OF TRACTS 73-78, 88, 105, AND 117-120, TOGETHER WITH A PORTION OF THE PLATTED ACREAGE WEST OF SAID TRACTS 80, 81 AND 112, ALL IN SECTION 18, TOWNSHIP 46 SOUTH, RANGE 42 EAST, OF "PALM BEACH FARMS COMPANY PLAT NO. 1" (P.B. 2, PGS. 26-28, P.B.C.R.), PALM BEACH COUNTY, FLORIDA. DECEMBER, 2005

LEGEND:

- ⊙ SET P.R.M. (UNLESS OTHERWISE NOTED) - 4" X 4" CONC. MON. WITH ALUMINUM DISK STAMPED P.R.M. #LB7264
- ⊙ P.C.P.
- ⊙ CENTERLINE

ABBREVIATIONS:

- CH CHORD
- CHB CHORD BEARING
- COR. CONCRETE CORNER
- D DELTA (CENTRAL ANGLE)
- D.E. DRAINAGE EASEMENT
- L ARCLength
- L.B. LICENSED BUSINESS
- L.E. LANDSCAPE EASEMENT
- L.M.E. LAKE MAINTENANCE EASEMENT
- L.M.A.E. LAKE MAINTENANCE ACCESS EASEMENT
- L.S. LICENSED SURVEYOR
- L.W.D.D. LAKE WORTH DRAINAGE DISTRICT
- MON. MONUMENT
- O.R.B. OFFICIAL RECORDS BOOK
- N.R. NON-RADIAL
- P.B. PLAT BOOK
- P.B.C.R. PALM BEACH COUNTY RECORDS
- P.C.P. PERMANENT CONTROL POINT
- P.O.B. POINT OF BEGINNING
- P.O.C. POINT OF COMMENCEMENT
- P.R.M. PERMANENT REFERENCE MONUMENT
- P.S.M. PROFESSIONAL SURVEYOR & MAPPER
- P.U.D. PLANNED UNIT DEVELOPMENT
- R RADIUS
- R.E.E. ROOF ENCROACHMENT EASEMENT
- R.W. RIGHT-OF-WAY
- SEC. SECTION
- S.F. SQUARE FEET
- U.E. UTILITY EASEMENT
- (M) MEASURED
- (D) DEED



SHEET 4 OF 9

KEY MAP
NOT TO SCALE

SEE SHEET 9

MATCH LINE

SEE SHEET 5

TRACT L-2
(WATER MANAGEMENT TRACT)
TO BE MAINTAINED BY THE TIVOLI ISLES OF PALM BEACH COUNTY HOMEOWNERS ASSOCIATION, INC. SUBJECT TO EXISTING LITTORAL ZONE RESTRICTIVE COVENANT AGREEMENT AS RECORDED IN O.R.B. 18454, PG. 41, P.B.C.R. 178218 S.F.

SEE SHEET 7

SEE SHEET 6

TIVOLI ISLES
PAGE 95
FLOOD MAP # 2004
ZONING PUD
QUAD # 51
SE 150
TAX 750
PUB NAME

UNPLATTED SECTION 13-46-41

US 441 / State Road 7
(ROAD PLAT BOOK # 176-377)
(O.R.B. 10714, PG. 1677)

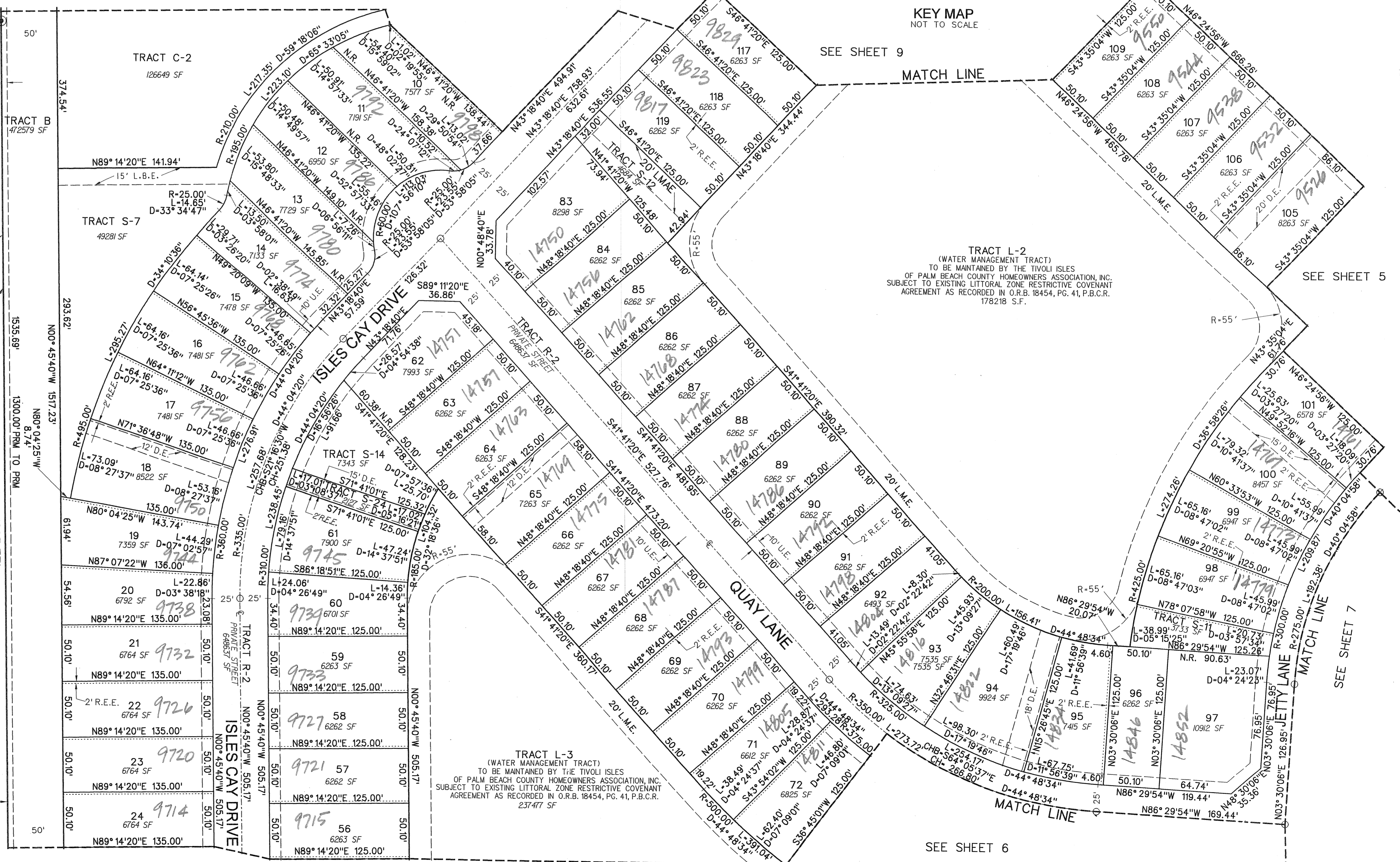
N00°18'49"W 1943.48'
R SURVEY F.D.O.-T
R/W MAP SECTION 93210-2524

L.W.D.D. E-1 CANAL
(O.B. 987, PG. 233)

PLAT LIMITS
N00°45'40"W 1517.23'
N00°04'25"W 874.74'
N00°45'40"W 1993.77'

W. LINE SECTION 18-46-42
N00°45'55"W 5432.96'

183.00' (D)
186.00' +/- (M)



TRACT L-3
(WATER MANAGEMENT TRACT)
TO BE MAINTAINED BY THE TIVOLI ISLES OF PALM BEACH COUNTY HOMEOWNERS ASSOCIATION, INC. SUBJECT TO EXISTING LITTORAL ZONE RESTRICTIVE COVENANT AGREEMENT AS RECORDED IN O.R.B. 18454, PG. 41, P.B.C.R. 237477 S.F.